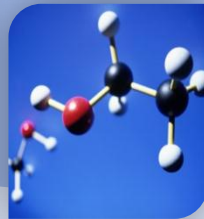
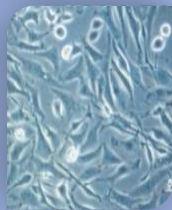
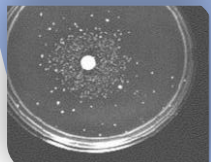


«...To develop research on biomarkers for a better assessment of genotoxicity associated risks »



## Your need, our expertise in genotoxicology

### Assessment of environmental impacts

- Disruption of biological systems in association to genotoxic pollutants (CMR products)
- Markers of the biological effective dose in all matrices (water, air, soil)

### Studies on human health

- Molecular epidemiology: Environment, health, food...
- Occupational health and biomonitoring

### Mecanisms of toxicity

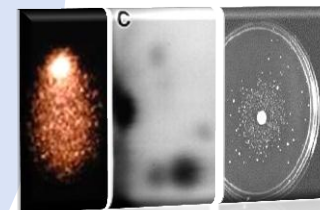
- Mecanisms of genotoxicity on a wide range of biological models: animal / cell / DNA
- Toxicological screening

## Our analysis methods : Highly sensitive/ Validated/ Versatile methods

- DNA adduct research by highly sensitive methods of **<sup>32</sup>P postlabelling** and adaptations
- DNA adduct research by **mass spectrometry** (R&D phase)
- Genotoxicity and mutagenicity assays by more conventional methods: Ames test, comet assay (*complementary services*)

## Our added value for the benefit of your project: «Genotoxicology R&D that fits your needs»

- Innovative tools in genotoxicology to meet your needs:
  - <sup>32</sup>P postlabelling method / mass spectrometry technology
  - Researcher and laboratory skills dedicated to your project
  - Full study reports, specially adapted to the specific application areas
  - A Global service provided by our expert network in toxicology
- Deadlines respect , Project transparency :
  - Specifications writing with a detailed activity plan, among the launch of the project
  - periodic intermediate reports showing the progress of the service



● **Our Facilities**

● **Contact**



**Dr Jérémie LE GOFF**  
**ADn'tox SASU**

Centre François Baclesse,  
Avenue du Général Harris  
14076 Caen Cedex 05  
FRANCE

**+33 (0)2.31.45.52.18**  
**+33 (0)2.31.45.51.72**  
j.legoff@adntox.com

● **Our references**

Winner of the Ministry of research National innovative company contest

- ▶ LE GOFF J, et al. *Aquatic toxicology* 2006, 79 : 55-64.  
DNA adduct measurements in zebra mussels, *Dreissena polymorpha*, Pallas. Potential use for genotoxicant biomonitoring of fresh water ecosystems.
- ▶ LE GOFF J, et al. *Mutation Research* 2005, 587 : 90-102  
Seasonal variations of DNA-adduct patterns in open field farmers handling pesticides.
- ▶ BILLET S, et al. *Cancer letters* 2008 18;270(1):144-55  
Genotoxic potential of Polycyclic Aromatic Hydrocarbons-coated onto airborne Particulate Matter (PM 2.5) in human lung epithelial A549 cells.

● **Our partners**



MINISTÈRE  
DE L'ENSEIGNEMENT SUPÉRIEUR  
ET DE LA RECHERCHE

